

Case Study: Dock 9, Erie Basin, Salford Quays



Kawneer helps to bring a futuristic appearance to a Salford Quays development

Curtain walling, windows and doors by Kawneer have helped to bring a futuristic appearance to a £25 million development of one of the last remaining sites at Manchester's iconic Salford Quays.

Kawneer products are futuristic at Salford Quays

Millennium Estates' two mixed-use towers next to Erie Basin at Dock 9, Salford Quays feature Kawneer's curtain walling, AA®601 top-hung casement and AA®603 tilt slide windows as well as 190 narrow-style and AA®605 swing doors for the external façade.

The curtain walled rainscreen front of block A of 10 storeys, which maintains a very horizontal emphasis, projects over the dockside walkway and cantilevers out akin to a ship launching into water. The 20 storeys of the predominately white block B hover over a two-storey podium structure that contains car parking for residents and retail units fronting the dockside walkway.

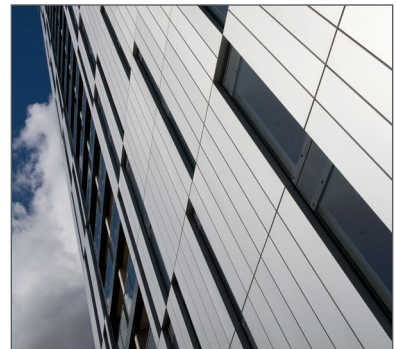
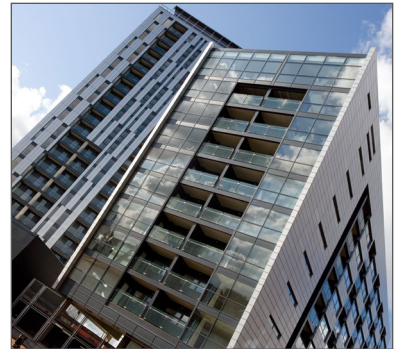
Broadway Malayan Architects designed the two concrete-framed residential towers to contrast in nature and positioning so they would have equal presence on the 0.46-hectare site and as such, Block A has been cladded horizontally and Block B vertically. Block A's apartments have been planned so the living room always has a corner view beyond the balcony towards the dock and Lowry Centre. Each room type has a different Kawneer window arrangement, all to a 500mm module. Block B contrasts the arrangement of Kawneer's windows in Block A by inserting vertical strips into the façade to 500mm modules. Various slot views are framed across the water at once, depending on the occupant's position within a particular room.

The two towers in total comprise more than 200 apartments including studios and one-to three-bedroomed units as well as 6,000ft² of retail space.

Architect Neil Brown of Broadway Malayan (now director of nb architects) said: "The Kawneer systems complied very well aesthetically and met all performance requirements as detailed by the acoustics and façade and M&E engineers. They created a very futuristic appearance in accordance with the original design intent and interface very well with the other materials used on the project. The selection of materials deliberately remained simple to enhance and complement the purity of each of the individual elements of the scheme."

It was a challenging project for Kawneer-approved sub-contractor Bennett Architectural Aluminium Solutions who co-ordinated closely with the specialist cladding sub-contractor at both design stage and installation. Design solutions were developed during regular team meetings with the architects and main contractor Laing O'Rourke. Sales director Rob Bennett said: "A fast-track build programme meant that a co-operative approach to project management was required, with the accurate planning of labour and materials. We utilised the comprehensive range of profiles available within the Kawneer AA®600 Series to provide effective interface details with the metal rainscreen cladding used on the project. Windows were installed to the metal cladding support prior to the installation of the rainscreen panels to allow internal trades to commence at an early stage of the build process.

This early involvement with the design team allowed interface details to be agreed to provide effective solutions to suit programme and budget."



Please contact our Architectural Services Team if you have a project you would like to discuss: Tel: 01928 502604 / Email: kawneerAST@alcoa.com

Kawneer UK Limited, Astmoor Road, Astmoor Industrial Estate, Runcorn, Cheshire WA7 1QQ
Tel: + 44 (0)1928 502500 Fax: + 44 (0)1928 502501

WWW.KAWNEER.CO.UK